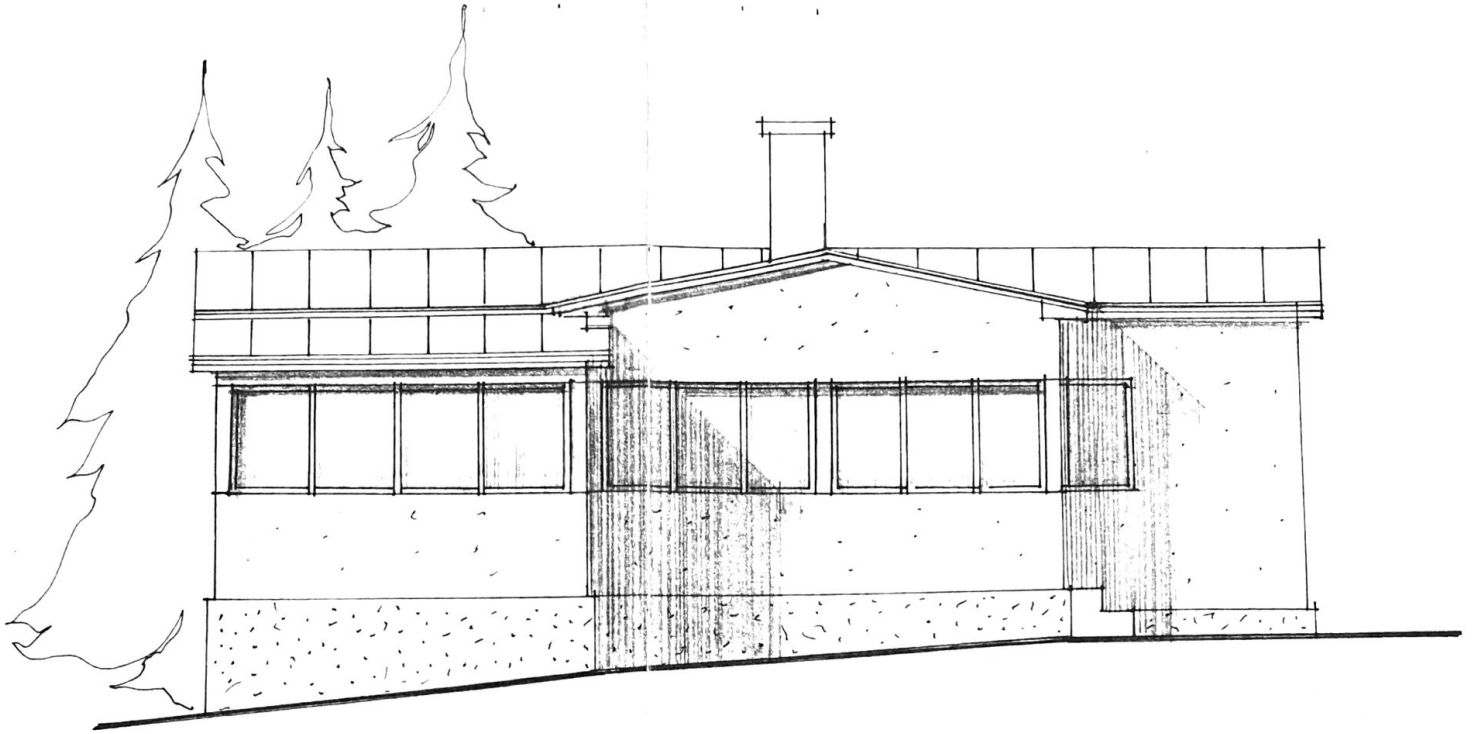
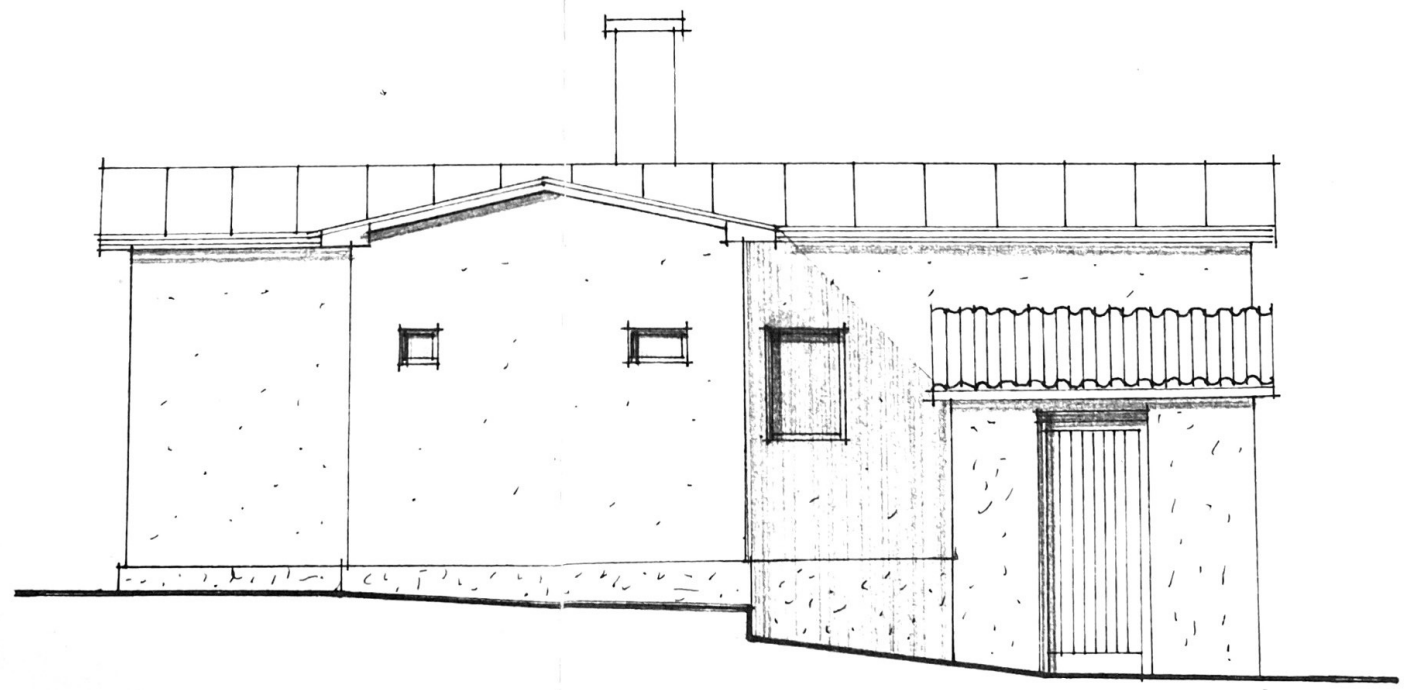


1:1



Handwritten architectural notes or a scale bar, consisting of various symbols and lines.



Handwritten architectural notes or a scale bar, consisting of various symbols and lines.

Kolaudace dne 30.6. 1977.

Schváleno č.j. 328/2 - 323/ 1977.

Za M N V Psáry:



| | | |
|--|-------|--|
| | | |
| | PSÁRY | |